



Southwest Cairn

Marking the trails for our members

March 2024



From the Presidents Saddle



April is looking like a nice, busy month. Not only is this ideal riding weather, we have several projects in the mix, an information educational session this month and some good discussion and decisions to make at our business meeting. We have work projects to discuss and how to spend some of our money on some ideas being contemplated. Your input is helpful so plan to attend.

This ties in with our educational session speaker. For April we have Ron Cooper, the new Trails Crew Foreman for the Utah Division of Outdoor Recreation Trail Crew program. His crew may need

help from us, and they may be able to help with our projects.

We have/had a work day planned at Red Mountain on March 23 to remove tumbleweeds. And the following weekend, March 30 we should have cleared some trail for the upcoming chapter ride on April 13 at Babylon Arch.

BCHU is challenging each state chapter to recruit members. All chapters have fewer than last year. Our members are our life blood; without them we do not carry the voice we need to be as successful of an organization as we have been. Whether or not the members participate in our activities, we need memberships. Of course, the more volunteers we have working on our projects the better it is for all. BCHU is offering a monetary reward for chapters that either recruit the most members or the biggest percentage increase. This will be another topic at our meeting.

In this newsletter you will see the monthly chapter ride report. You will read about what could have been a disaster turned out, luckily, to be a little bit funny, all thanks to the good

(Con't Page 5)



NEXT MEETING

Community Building

See Page 12 for details



April 13th—Babylon

See Page 12 for Details

Inside this issue:

President's Message	1
Ride Story	2
Ride Pictures	3
Trails and Best Practices	4
Meeting Minutes	6-7
State Meeting Minutes	8-9 & 10
Trail Maps	11
Calendar / Sponsor of the Month	12

April 3rd

**Meeting at the Community
Bldg 6:00PM Education
Business to Follow**

Red Mountain Chapter Trail Ride March 9, 2024

By Rick Schmalz, Mountain Springs, Nevada



It was a bright sunny morning as 11 riders assembled in the trailer parking area to embark on a colorful and scenic 8-mile ride. The parking area also held several other horse trailers when we rode out and even more when we returned. A good idea just draws a crowd.

A pre-ride safety briefing was provided by our trail boss of the day, Lin Hokana, followed by riders' introductions and where we all hail from. Riders were Dana Milsap, Deja Schweitzer, Freddy Dunn, Larry Dunn, Lin Hokana, Jarice Butterfield, Rick Schmulz, Sheryl Schmulz, Julie Dunn (no relation to the married Dunns) and her guests Herb Seeley and Denean Seeley. We all signaled we were ready and off we went.

As we set out into the forest at lower elevation there was lots of chatter among the jacketed riders as our horses warmed up in the ultra-fine sand footing. The smell of the pines and junipers in the bright morning light was very welcome after enduring the harsh elements of winter for several months.

The fine sand footing began to give way to more rocky areas as we crossed several washes and began a gentle climb while enjoying magnificent vistas of the southern Utah mountain ranges. The horses were warmed up and many riders decided it was time to remove their jackets and enjoy the warmer midday air.

After a brief regroup, we began a more rigorous climb with many switchbacks and some rocky footing which caused our horses to think more carefully about where they were going to step. The ascent was underway with breaks in the trees which revealed the spectacular beauty of the vividly colorful mountains of this area.

With most of the climb behind us the group pulled up to a quarter acre pond left by all the recent rains. Riders and horses enjoyed the break while some played in the water. My mount, Maverick, a Nevada mustang decided it was a great day for swimming, so he dropped and rolled. It was all I could do to keep from getting my leg pinned under him while also avoiding entanglement with the lead rope to my ponied horse, Dually.

Thus, half soaking wet I emerged from the pond having provided good entertainment for all. Deja got some video, and my pride is glad we are fairly hidden by other horses as we dove into the water. Many thanks to the several riders who helped me shed wet clothes and set them to dry in the breeze on top of the Snow Canyon overlook several hundred yards later.

Trail riding is always an adventure where memories are made. I will always remember my first ride and swim with Southwest Utah Backcountry Horsemen. What a great group of horsemen you are. See you next month.

Happy Trails-



Equestrian Trails and Best Practices in the RCDR

We here with the Red Cliffs Desert Reserve are concerned about the increase in all kinds of social trails between the Grapevine and Cottonwood trailheads. Hikers, bikers, and horseback riders have substantially widened the authorized trails, and many shortcuts, parallel routes, and unnecessary spur trails keep popping up. **We need your help** to keep this area beautiful, wild, and well preserved for native wildlife and scenic value.

The Reserve was created to protect the Mojave desert tortoise. As a result, it's essential that we reduce our impacts as much as possible to keep routes open and available to everyone. Shortly after the Reserve was established, a Public Use Plan was developed by the various local land managers to identify which trails would be authorized for non-motorized use. The trails depicted on the map here are those authorized for multi-use under the Public Use Plan.

Eventually, the BLM will complete a Travel Management Plan for the Red Cliffs NCA. Their plan may incorporate new or different trails on BLM managed lands, but until that time, we urge you to stick to authorized trails and ask that you share this information with other riders — particularly if you see someone traveling on an illegal trail.

The best way to approach this topic with another rider is to be friendly and genuine. Offer the information as a way of helping the visitor find their way if they're lost or phrase it as wanting to help them avoid possible citation by law enforcement. If the conversation becomes confrontational or aggressive, it's best to just move on and let them be.

We recognize that social trails are usually created without any malice or intent to flaunt rules. Many individuals are following directions by word of mouth or using Internet sources like All Trails to navigate even though either may not accurately describe the official trails. If you're ever confused about authorized routes, please check with the Red Cliffs Desert Reserve or the St. George Field Office of the Bureau of Land Management (contact info listed below).

Please continue to apply Leave No Trace principles to protect the desert habitat:

- Be considerate of other users

- Ride single file to avoid widening the trail

- Respect wildlife (including the desert tortoise)

- Remember water and forage are extremely limited in the Reserve

- If you bring hay with you to feed your horse, please make sure to use certified weed free products

Help us protect the Reserve by reporting off-road vehicle use, aggressive dogs, poaching, vandalism, or other illegal activities to county dispatch at (435) 634-5730. We thank you for sharing stewardship over this beautiful area we call home: please help and encourage your fellow equestrians to do the same.

Contacts

Red Cliffs Desert Reserve: (435) 301-7430, info@redcliffsdesertreserve.com

St. George BLM Field Office: (435) 688-3200, utsgmail@blm.gov

nature of the rider and author. You had to have been there to really appreciate it.

Two maps are also in the newsletter. One is an official map of the equestrian trails at the Grapevine Crossing, aka Bracken's nature of the rider and author. You had to have been there to really appreciate it.

Loop off of Exit 13. As stated before, this is the National Conservation Area; stay on the trails, do not wonder off of them as that could damage tortoise habitat. And dogs must be on a leash here. It is a privilege for us to ride here so please adhere to their requirements.

The second map is an informal map of the trails at Red Mountain. I ride there frequently and I have not ridden a couple of these. Thanks, Kathy Duvall for making this map.

Last month I mentioned the movie "Call Me Mule" featured at the DOCUTAH film festival. Several members attended and the filmmaker, John McDonald even recognized our chapter during the Q&A session. He sent me the following email:

"I just wanted to send you this quick note and thank you and your BCH members for attending the screening of CALL ME MULE. Nina and I really enjoyed our time in St. George and the beautiful country surrounding the town. We were honored to receive the Enlightenment Award from the DOCUTAH Film Festival... Hopefully there will be an opportunity for more of your members to see the documentary in the future."

You can see the film's trailer at <https://www.3mulesmovie.com/>. It was a fun event and a great story.

Happy trails...Lin



Meeting Minutes – 6 PM, March 6, 2024**Call to Order: Lin Hokana**

Attending: Freddy Dunn, Dana Millsap, Carol Gregory, Kathy McGann, Doug West, Ronald Johnson, John West, Deja Schweitzer, Scott Ford, DeAnn Fieselman, Kathy Duvall, Mike Duvall and Lin Hokana.

Educational Presentation: Holly Snow Canada, Executive Director, CSU

Minutes: Motion made and approved to accept minutes published in the newsletter

Treasurer's Report: Freddy Dunn:

John West sold the last two commemorative belt buckles.

Motion made and approved to accept the treasurer's report.

Old

Business:

- Brackens Loop:
 - o The land manager has obliterated the unsanctioned bike trail.
 - o Equestrian Trail map was circulated for comments and suggested revisions were made. Expect a final revised copy to be circulated soon.
 - o Construction is progressing; a temporary trail access is located near the I-15 off ramp.

New Business:

- Merchandise (for sale or gifts)
 - o Chapter Logo – Doug West has a logo being designed and will circulate for comment when finished.
 - o BCHU Merchandise – state is planning to have something with the state logo made available to the chapters.
 - o BCHU-Southwest Merchandise – the state is offering a grant that chapters can use for recruitment or advertisement, etc. A committee was formed to select items; Kathy McGann, Kathy Duvall and Carol Gregory.
 - o Sending meeting announcements to additional outlets – “Events” is one Facebook group; others perhaps viable options. Deja will investigate.

Purchase new signage for New Fencing at Red Mountain Trailhead: 20 white with blue lettering “clean up your poop” signs will be purchased from Star – they have the template from prior project. Twelve will be placed on the new fencing at Red Mountain.

Committee Reports

Liaison to local public lands agencies: Freddy Dunn and Lin Hokana

Meeting with Braden Yardly at Pine Valley, March 7: Lin and Freddy attending.

Coal Pits/Scoggins Wash – Lin received a list of materials Zion NP would like for continuation of work started in 2023. The bulk of the grant money is available for this project. Lin will facilitate the purchase in coordination with Tim from Zion.

Membership – DeAnn Fieselman volunteered to be the new Chairperson!!!

Work Projects: John West said 8-12 members of Wasatch Chapter plan to come here for 4 days in early May and have offered a day to assist with a project as well as riding trails.

Tumbleweeds at Red Mountain need to be removed. March 23rd was selected. Lin will ask BLM to supply a walk-in dumpster.

Babylon Arch needs trail trimming prior to upcoming ride. March 30th was selected.

Red Mountain trails need repair. One section is not on BLM land; Paul has contact information for that land owner.

Road base needs to be added to several step overs, including 600 in Hurricane and Harrisburg near campground.

Education: Doug West

April 3 – Ron Cooper, Trails Crew Foreman, UT Div. Outdoor Rec. Trail Crew

May 1 – Steve Snow, Virgin River Land Trust

June 5 – Rick Miller, Southern UT Geology

Ride Calendar: February 5, 2024

- March 9 – Red Mountain, Trail Boss Lin Hokana

April 13 – Babylon, Trail Boss Jeanette Blasdel.

Announcements:

CPR and First Aid training was last done 2 years ago and cards are expiring. Lin and John will investigate recertification training.

Adjourn: 7:53 PM



Minutes from BCH Utah State Meeting

Richfield Utah

20 Jan 2024

Minutes

Old Business:

Minutes of 16 Nov Meeting **Appro**Financial Report **Approved**

Membership Report

As of December 31, 2023

Purple up from 2022

CHAPTER TOTALS	Ind	Fam	Pat	Youth	Total	2022	NEW Memberships	% of New
Bridgerland	14	10	0	0	24	29	10	41.67%
Canyonlands	23	18	0	1	42	43	9	21.43%
Central Utah	14	9	0	0	23	18	8	34.78%
High Desert	8	13	0	0	21	27	3	14.29%
HiLine & Hobbles	21	32	0	0	53	66	17	32.08%
High Uintah	4	10	0	0	14	13	14	100.00%
Mountain Ridge	43	33	1	0	77	90	10	12.99%
San Rafael	4	14	0	5	23	24	6	26.09%
Southwest	57	39	4	4	104	109	19	18.27%
Uinta Basin	0	6	0	1	7	13	1	14.29%
Wasatch Front	33	28	2	23	86	81	26	30.23%
Unaffiliated	1	0			1	1	0	
2023 TOTALS	222	212	7	34	475		123	25.89%
2022 Year End Totals	247	223	13	19	502	514		
Number of Members	222	424	14	34	694			

DOWN 27 Memberships

A motion was made and accepted to budget \$1,000 as an award to promote the 2024 membership drive. To be dispersed among the top three chapters as determined in the next state meeting.

2024 Budget

Budget was approved.

Committee formed to determine Marketing materials to be purchased with \$5000 set-aside. Kari Prescott, Lin Hokana, Linda Price volunteered to bring ideas to next meeting or to provide Board with suggestions for a Doodle poll before the next meeting.

Each Chapter may apply to the BCHU Executive Committee for a \$500 grant

New Business:

2024 Officer Election

Chairman: Lisa Caddy was elected by acclimation

Vice Chairman: Stephen Schultz was elected by acclimation.

National Director Alternate: Phil Blair was elected by acclimation.

Public Lands Report presented by Rod Player. Each Chapter provides Rod with Chapter Public Lands point of contact.

Public Lands. Rod Player

Each Chapter needs to put their Public Lands point of contact on their website including name, e-mail, and phone number.

MINIMUM DUTIES OF A PUBLIC LANDS PERSON/COMMITTEE BCH CHAPTER LEVEL

- Meet with local governing agencies of the public lands in your area (US Forest Service, Bureau of Land Management, National Park Service, Army Corps of Engineers, etc)
- Meet with other organizations that are using the public lands

Goal of meetings with government agencies:

- Form and maintain a working relationship with regular communication about the things that affect our mission. Examples:

o Talk about upcoming training required to work for them o What are their priorities o What is our priority o What we can do for them, ie training we may provide to their employees (saw training, horsemanship, etc) o Current and upcoming projects they are working on that affect our mission or our ability to partner with them. Example: Forest plans, travel plans, current overuse, new agreements (cost share, volunteer)

Goals of meetings with other organizations:

- Find common ground, work on a project together. There are going to be things that you will have to agree to disagree on; you should recognize them and work on what you can agree on
- When it comes time to comment on an action a government agency is considering or a grant for trail work, it will carry more weight when you are collaborating with other organizations

Communication

- Take all this information and report your successes and issues within your chapter officers and members
- Report to your state public lands person so you can get help from other chapters or give help to them in order to maintain a unified, consistent response.

E-Bike Incident Reporting Form - available under Documents and Forms on BCHA Website

Horse Camp Incident Form - available under Documents and Forms on BCHA Website

A Youth Program Survey has been sent to each Chapter President/Chair that should be completed and submitted... (this will take less than 5 minutes).

Folks need to use the information found on the National Website. There is a great deal of advice, examples, etc. that can be used to help with your local issues/concerns. There are great ideas that can be used for Chapters monthly meetings

Volunteer Hrs. Report

Backcountry Horsemen of America Volunteer Hours Report Utah 2023				
	P1 Totals	Rate per hour/mile/day	Total Value	
Total Basic Hours	3612	\$31.80	\$114,853.65	Calculated per hour
Total Skilled Hours	2230	\$47.70	\$106,371.00	Calculated per hour
Total Trail Recon Hours	2169	\$31.80	\$68,958.30	Calculated per hour
Total LNT - Education	483	\$31.80	\$15,368.94	Calculated per hour
Total Public Meetings	445	\$31.80	\$14,135.10	Calculated per hour
Total Administrative Support	1609	\$31.80	\$51,166.20	Calculated per hour
Total Travel Time	6295	\$31.80	\$200,181.80	Calculated per hour
Total Hours	16842.08			
Wilderness Trail Miles	28			
Other Trail Miles	2			
Total Trail Miles	28			
Personal Vehicle	29685	\$0.62	\$18,404.58	Calculated per mile
Stock Hauling	39714	\$1.35	\$53,613.36	Calculated per mile
Total Travel Miles	69399.4			
Power Equipment	440	\$30.00	\$13,200.00	Calculated per hour
Heavy Equipment	17	\$110.00	\$1,870.00	Calculated per hour
Total Equipment Hours	457			
Total Stock (Pack and)	911			
Total Stock Days	976	\$100.00	\$97,600.00	Calculated per day
Total Donations	#####		\$34,343.00	
Total			\$790,065.92	

BCHUtah.org update requirements.

Officers

Dues

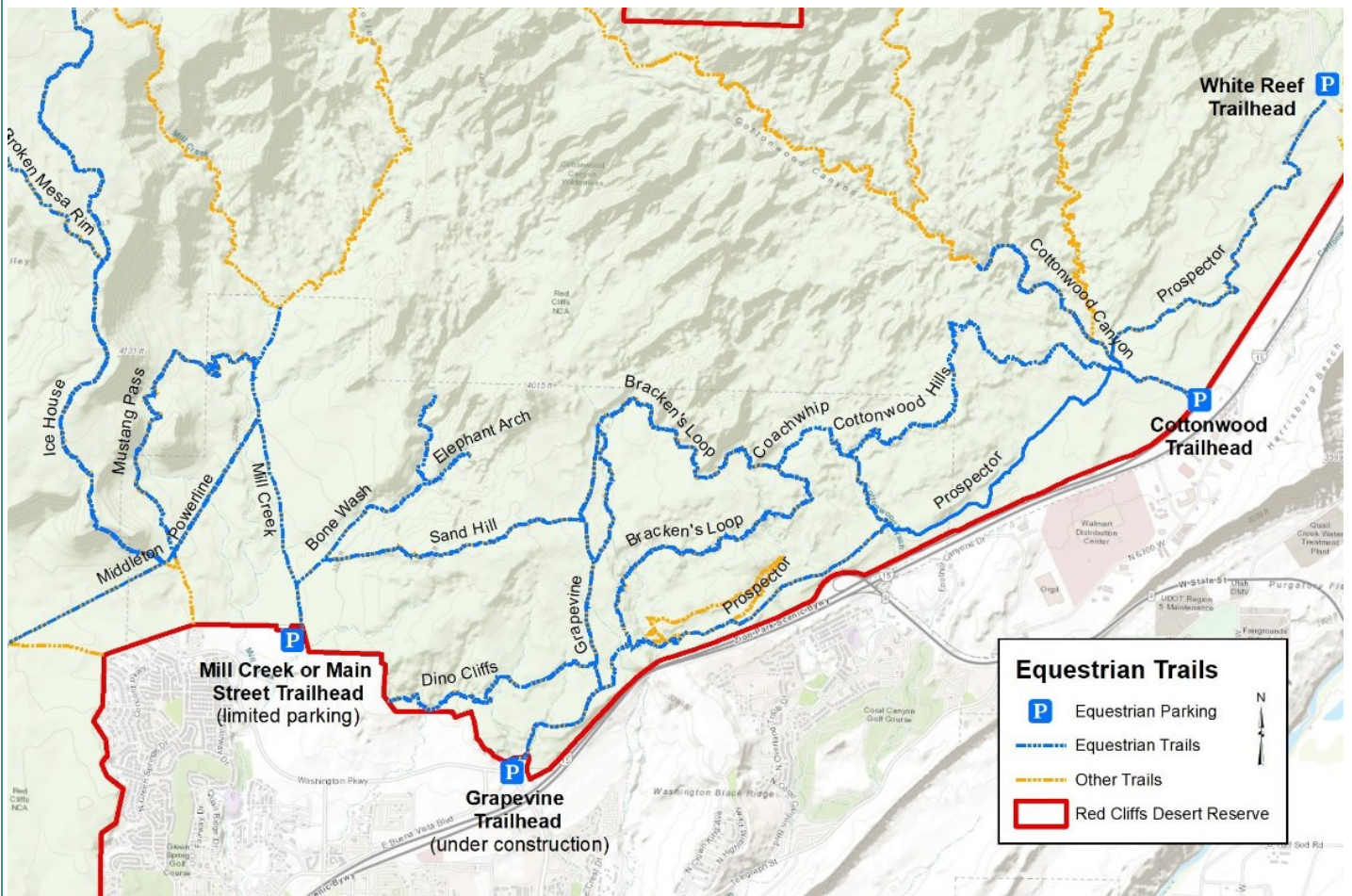
Send updates to Craig Allen, allnceco@msn.com

Chapter Annual Report Summaries Presented by each Chapter present

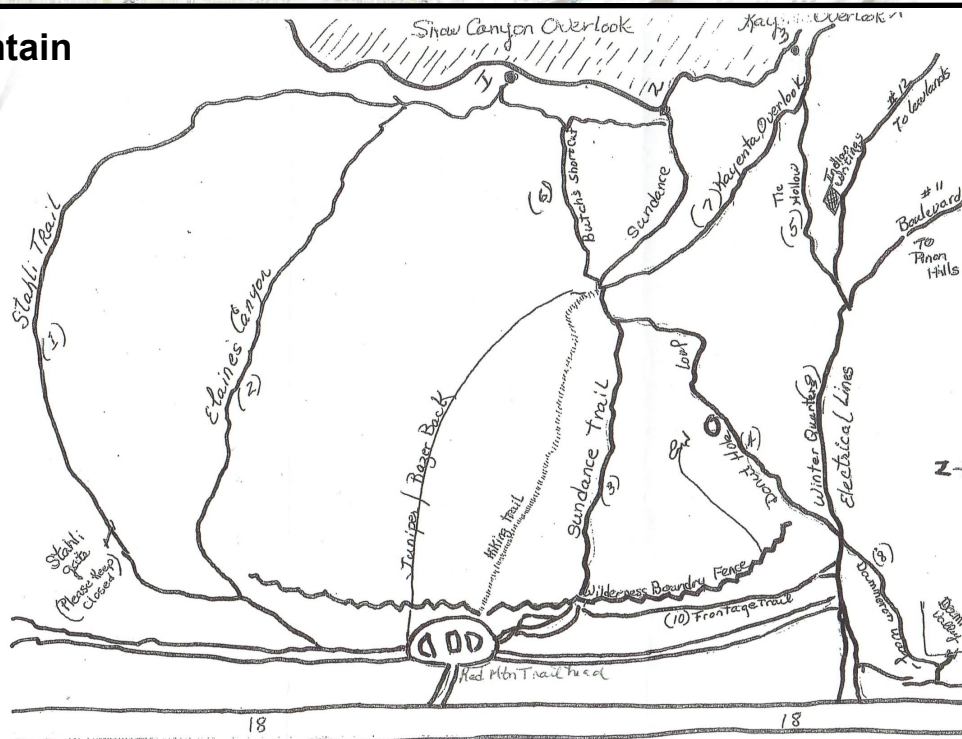
Next Meeting: 18 March at 6:30 PM via Zoom

Adjourned

Grapevine Trailhead



Red Mountain Trails



Calendar of Events

CHAPTER MEETINGS :

April 4, 2024—St. George Community Bldg. Education 6:00PM—Business to Follow

Saturday, April 13th. Babylon

This trail ride is a 9 mile loop and is rated difficult. Time expected in the saddle 3.5-4 hours at a quarter horse walk. There are several technical sections of sandstone rock with several high step-downs, bush whacking through deep sand and tamarisk, and several river crossings with steep embankments. Experienced riders and horses are recommended.

This is a beautiful trail that has a little bit of everything! It connects to other trails and takes you to several wonderful landmarks. **Please be tacked and ready to ride at 10:00 a.m., pack a lunch.**

They are currently doing construction on the Leeds road just before the turn off to Babylon so was have had to drive further north on I-15 to the Toquerville exit and then travel south on the frontage road back towards Leeds and the Babylon road

Toquerville exit. You will turn right at 1700 the first complete road. It has a large dirt area on one side and a new RV place on the other. Travel south to E 900 N road look for a smallish brown sign on the right.

Keep on eye on the weather, we will not ride if there are high winds or rain.

Do not bring a large LQ trailer. 3/4 Horse trailers and moderate size livestock trailers are fine. Considering combining trailer if possible. Please RSVP/Comment if you are planning on joining this ride, thanks!

Sponsor of the Month!

Bryce Valley Ranch RV & Horse Park

In the Photo: owners Pete & Sherry Jensen



Chapter contacts

President: Lin Hokana 209- 790-9022
BCHU.southwestpresident@gmail.com

Vice President: John West 678-360-0999
johntaylorwest@gmail.com

Secretary: Jarice Butterfield 805-368-2132
bjarice@aol.com

Treasurer: Jeanette Blasdell 818-415-1305
bchswtreasurer@gmail.com

Newsletter: Paul Sloane 632-7642
psloane@infowest.com

Media/Public Relations:
Deja Schweitzer 669-2759
dejaschweitzer@gmail.com

Website: www.bchutah.org—click on Southwest link-
Chapter email: bchu.southwest@gmail.com

BACK COUNTRY HORSEMEN OF UTAH—Southwest Chapter

PO Box 3174, St. George, UT 84771

MEMBERSHIP APPLICATION

New Membership: _____ Renewal: _____
NAME/S: _____

*Please list names for family membership. Children over 18 may be included in family membership or join as individual members.

ADDRESS: _____

PHONE NUMBERS: _____
Home: _____ Work: _____
Cell: _____ Fax: _____

OTHER HORSE/MULE ASSOCIATIONS YOU BELONG TO: _____

EMAIL ADDRESS: _____

Liability Release: (MUST BE SIGNED)

Recognizing the fact that there is a potential for an accident wherever horse/mule use is involved, which can cause injuries to horses/mules, riders and spectators and also recognizing the fact that Back Country Horsemen of Utah, including units, officers, directors, or members cannot always know the condition of trails or the experience of riders or horses/mules taking part in trail rides or other BCHU functions, I do hereby release the above named from any claim or right for damages which might occur to me, my minor children or horses/mules.

By signing this release, I/WE recognize the following Utah State Law, *UCA 78-27b* Limitations on liability for Equine and Livestock Activities. * It shall be presumed that participants in equine or livestock activities are aware of and understand that there are inherent risks associated with these activities. * Inherent risk* with regard to equine or livestock activities means those dangers or conditions, which are an integral part of equine or livestock activities. The equine activity sponsor is not liable for those inherent risks. If you are unwilling to assume these risks for yourself or for those under your supervision, you should not participate in these activities.

Signed: _____ Date: _____

Signed: _____ Date: _____

MAKE CHECK PAYABLE TO BCHU: Individual: \$30.00; Family: \$40.00; Patron: \$100.00

Back Country Horsemen of Utah



Southwest Chapter Newsletter
P.O. Box 3174
St. George, UT 84771

The Purpose of the Back Country Horsemen of Utah is:

1. To perpetuate the common sense use and enjoyment of horses and mules in America's back country and wilderness.
2. To work to ensure the public lands remain open to recreational pack and saddle stock use.
3. To assist the agencies responsible for the management of public lands.
4. To educate, encourage and solicit active participation in wise and sustaining use of back country resources by horsemen and the general public, commensurate with our heritage.
5. To foster and encourage the formation of new chapters of Back Country Horsemen throughout Utah.

To: